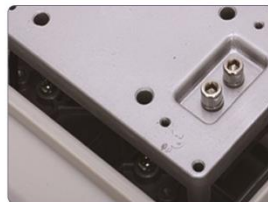




Accurate Weight



Adjustable feet



Load Cell Bracket



Stainless Steel Pan

	15KG	2g
	30KG	5g
Power Supply	AC 220V/50HZ ;DC 6V/5AH rechargeable battery	
Platter Size	304 full stainless steel,230*200mm	
Display	6-bit LED	
Working Temperature	-10°C~40°C	
Working Humidity	≤ 100%	
Tare Range	100% full span	

- ◆ IP68 rated for wash down
- ◆ ABS housing conform to HACCP food safe standard
- ◆ 6-bit LED dual side display
- ◆ Non-slip adjustable feet and level indicator
- ◆ External calibration
- ◆ Zero tracking
- ◆ Factory default parameter reset
- ◆ Able to set up weighing speed and anti-vibration level
- ◆ Able to set up LED brightness
- ◆ Able to set up weight unit kg/g
- ◆ Low battery auto power off
- ◆ Ideal for applications including high humidity surrounding of food or seafood markets, food processing factories, delicatessens or any other use